

Popular Annual Financial Report



WHITPAIN TOWNSHIP, PA



For the Fiscal Year Ended December 31, **2018**

Table of Contents

- 3 MISSION, VISION, VALUES**
- 4 MANAGER'S MESSAGE**
- 5 2018 HIGHLIGHTS**
- 6 BOARD OF SUPERVISORS**
- 7 ORGANIZATIONAL CHART**
- 8 WHITPAIN FACTS & FIGURES**
- 9 SOURCES OF GENERAL FUND REVENUE**
- 10 EXPENSES - WHERE DOES GENERAL FUND REVENUE GO?**
- 11 YOUR TAX DOLLARS AT WORK - HOW IS GENERAL FUND REVENUE SPENT?**
- 12 STATEMENT OF NET POSITION - ASSETS AND LIABILITIES**
- 13 STATEMENT OF ACTIVITIES**
- 14 LONG-TERM BOND DEBT**

19K

Residents

12.8

Square Miles

1701

Year Founded

Mission, Vision, & Values



Mission

The mission of Whitpain Township Government is to efficiently, responsibly, and creatively provide the essential services that build value, enhance quality of life, and protect the health, safety, and rights for all who live in, work in, and enjoy Whitpain.

Values

Whitpain Township Government seeks excellence in accomplishing every facet of our mission. In pursuit of excellence, we value most of all:

Integrity: We follow moral and ethical principles as we conduct our work. We are consistent in our deeds, methods, and expectations.

Respect: We treat everyone with respect. Our actions and words will demonstrate consideration and appreciation of others.

Responsiveness: We respond quickly but thoughtfully to individuals, situations, and events.

Stewardship: We value our natural, financial, and human resources and are diligent in protecting, preserving, and enhancing Whitpain Township.



Partnership: We establish transparent, long-term relationships that are based on clarity, trust, shared goals, and open communication with organizations that are committed to improving Whitpain Township.

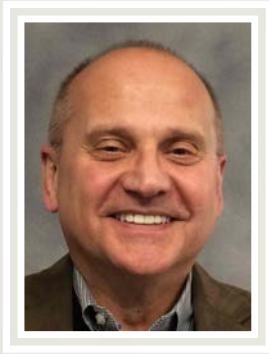
Vision

Whitpain Township is a community that embraces the future while cherishing our heritage. We will continue to be recognized for our diversity, fiscal responsibility, and leadership in resource conservation. We shall never waver in our collective commitment to ensuring public safety and enhancing the quality of life of all of our fellow citizens.



MANAGER'S MESSAGE

PAGE 04



ROMAN PRONCZAK Township Manager

"On behalf of the Board of Supervisors, I am pleased to present to you Whitpain Township's first annual Popular Annual Financial Report (PAFR) for the year ending December 31, 2018. The financial information in this PAFR was derived from the Township's Comprehensive Annual Financial Report (CAFR). The CAFR was prepared in conformance with Generally Accepted Accounting Principles (GAAP) and audited by the firm of Mallie, LLP. The Board of Supervisors, Elected Auditors, and staff members review the CAFR at an annual public meeting each June. Readers seeking more detailed information are encouraged to read the CAFR which is available at www.whitpaintownship.org or at the Township Building, 960 Wentz Road, Blue Bell, PA 19422.

In the following pages, readers will receive an overview of the Township's financial outlook, review graphs and charts describing the 2018 Budget, and read about important projects and initiatives. The Township's overall financial picture remains strong as evidenced by our Moody's Aaa Bond Rating. Additionally, our tax rate has remained unchanged since 2010 and projections show that the General, Capital, and Open Space Budgets can be funded without a tax increase until 2023."





- Township receives Certificate of Achievement for Excellence in Financial Reporting
- Supervisors join WRA in celebrating new clubhouse
- Right turn lane added to Butler Pike @ Skippack Pike
- Township maintains Moody's Aaa Bond Rating
- Summer concert and movie series brings big crowds
- Climber Safety School saves Township nearly \$50k
- US 202 Widening Project - construction begins
- Whitpain mourns loss of former Manager, Phyllis Lieberman
- Park and Recreation Zoning approved
- Whitpain celebrates another successful Community Festival
- Over 7 miles of Township roads resurfaced
- Centre Square Fire Company opens new firehouse



Eagles Quarterback Carson Wentz was a guest speaker at the 2018 North Penn Valley Boys & Girls Club annual dinner. The Club opened a location in West Ambler in 2017. As a thank you to Wentz, Township Manager Roman Pronczak presented him with a Wentz Road sign.



BOARD OF SUPERVISORS

PAGE 06



Fred Conner, Chair

Fred has over 30 years of experience leading organizations in business, the military, and in his community. Now as an independent management consultant, Fred has served the Township on the Open Space Committee from June 2004 through December 2008, the Planning Commission from September 2006 to December 2008, and on the Zoning Hearing Board from January 2009 through November 2009. He has served on the Board of Supervisors since shortly after being elected in November 2009.



Adam Zucker, Vice-Chair

Adam has been a Whitpain resident since 1994. He is the managing shareholder in a successful Montgomery County law firm. Adam has served Whitpain Township in various capacities for close to 20 years including his vice chairmanship of the Zoning Hearing Board from July 1998 through December 2007. He has served on the Board of Supervisors since January 2008.



Anthony F. Greco, Secretary

Tony has been a resident of Whitpain Township for 41 years. He is a veteran of the US Navy having served from 1955-1963. Tony was in the steel business for 50 years, first working as a sales manager for American Steel Engineering Company and then in 1984, he started his own business, TFG Steel Associates which sold steel to the construction industry. Tony has been involved with Whitpain Township for the last 34 years. He has served on the Board of Supervisors since 1997.



Ken Wollman, Treasurer

Ken, first elected to the Board in 2013, is a 25 year resident of Whitpain Township. Ken, who works full time for Cargill Inc. in Sales Management, is the Board's Treasurer and currently serves on the Finance & Pension, Personnel, West Ambler/Wissahickon Valley Boys & Girls Club, and Board & Commission Interview committees.

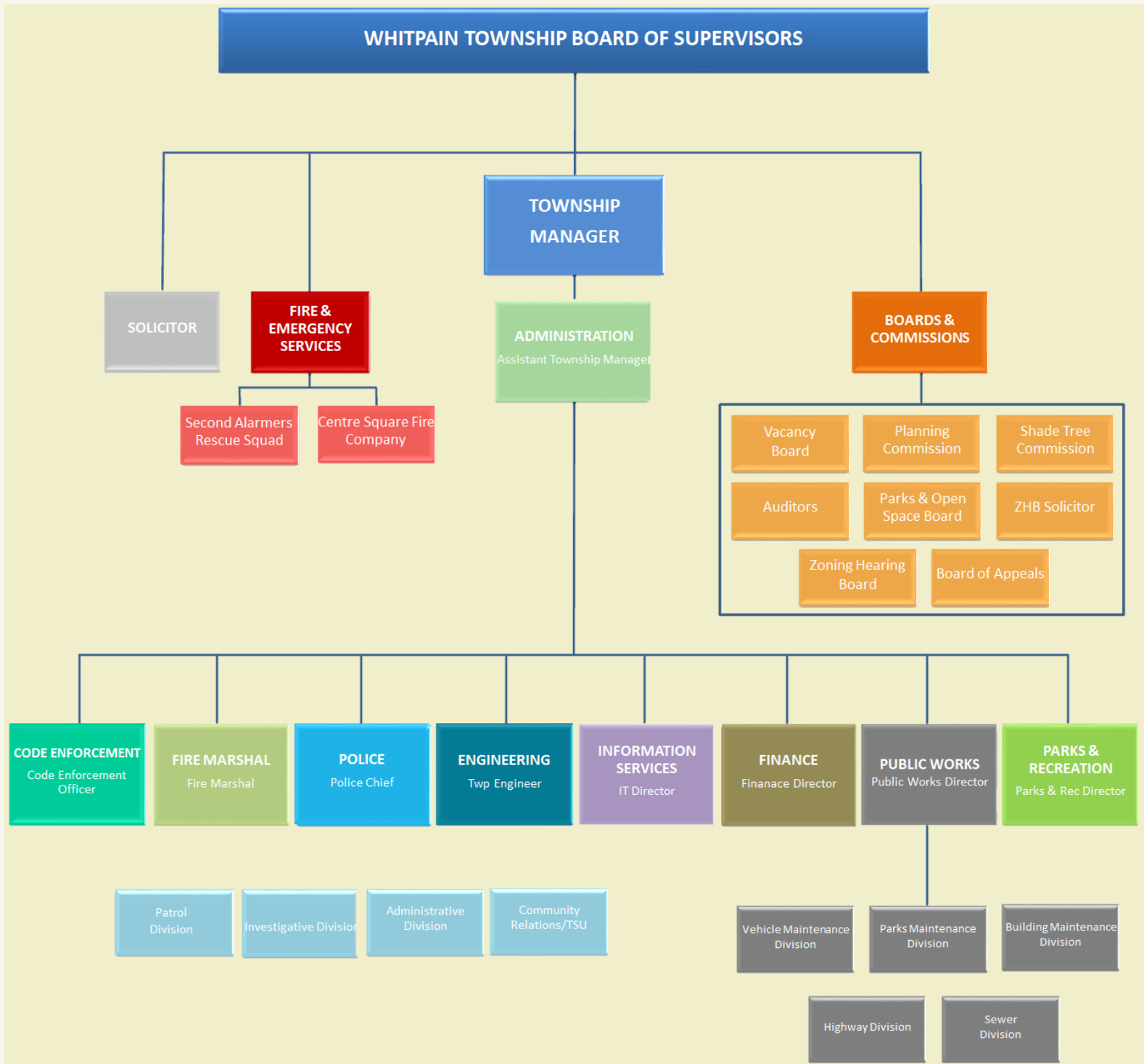


Michele Minnick, Assistant Secretary

Michele is a 25-year resident of Whitpain Township. She is a Revenue Development Specialist for Montgomery County, developing and implementing strategies and tactics for enhancing county revenues. She functions as a liaison with the state for compliance of licensing and hotel taxes. She and her husband, David, have two children. Newly elected in 2017, she currently serves as the Assistant Secretary.



ORGANIZATIONAL CHART





WHITPAIN FACTS & FIGURES

General

Approximately 16 miles from Philadelphia
Population: 19,151 (2017 American Community Survey)
12.81 square miles
94 full-time Township employees

Public Works

67.78 miles of roadway
27 Traffic signals
215 total roadways

Parks and Recreation

10 Parks
425 acres of Township open space
696 acres of combined open space including Township and WVWA

Sustainability

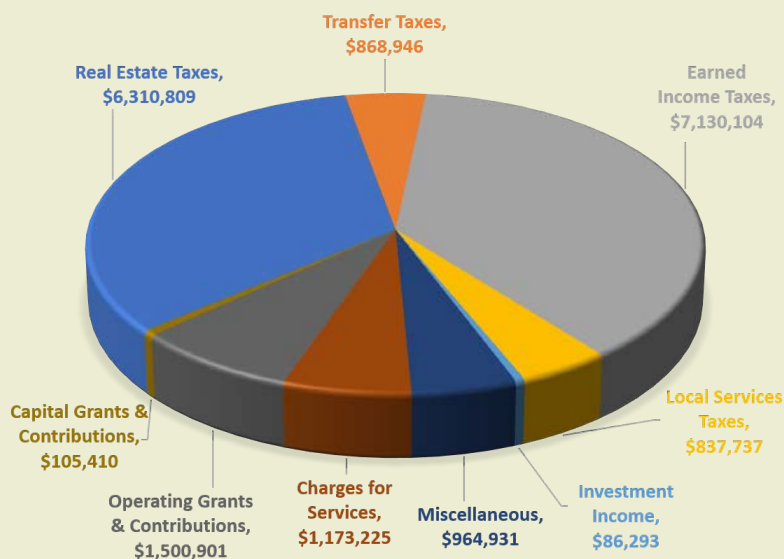
Received Gold Level Traffic Demand Management Award from GVFTMA
Partnered with Montgomery County and WVWA to preserve the Cheston Property
Recognized as a Tree City USA in 2018 (23 consecutive years)
Longest active recipient of Tree City Growth Award in PA (19 years)

Recognition

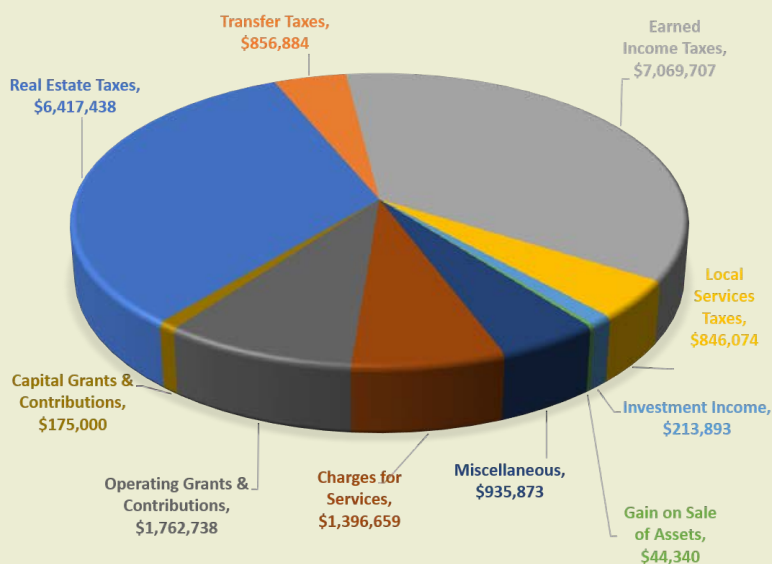
Whitpain Police Department Accreditation by PLEAC
GFOA Certificate of Achievement for Excellence in Financial Reporting for 7 consecutive years

SOURCES OF GENERAL FUND REVENUE

2017 Revenues



2018 Revenues



Whitpain's largest source of general fund revenue comes from the earned income tax which accounted for 43% of tax revenue in 2018 or \$7,069,707. The next largest component of general fund revenue comes from the real estate tax which accounted for 30% of tax revenue or \$6,417,438 in 2018. Real estate taxes have been held steady at 3.20 mills since 2010. In the 2018 budget, the existing 3.20 millage rate was reallocated between funds as depicted in the below graphic.

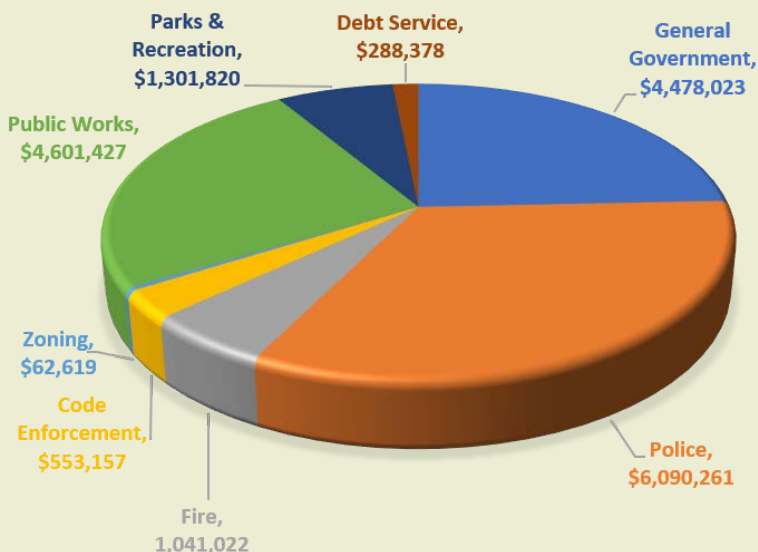
Millage

	Existing	New		
General Fund	2.02	2.39	General Fund	→ 2.02
Fire Tax	0.40	0.40	Capital	→ 0.22
Fire Hydrant	0.05	0.05	Open Space	→ 0.15
Debt Service	0.73	0.36		
	<u>3.20</u> mills	<u>3.20</u> mills		

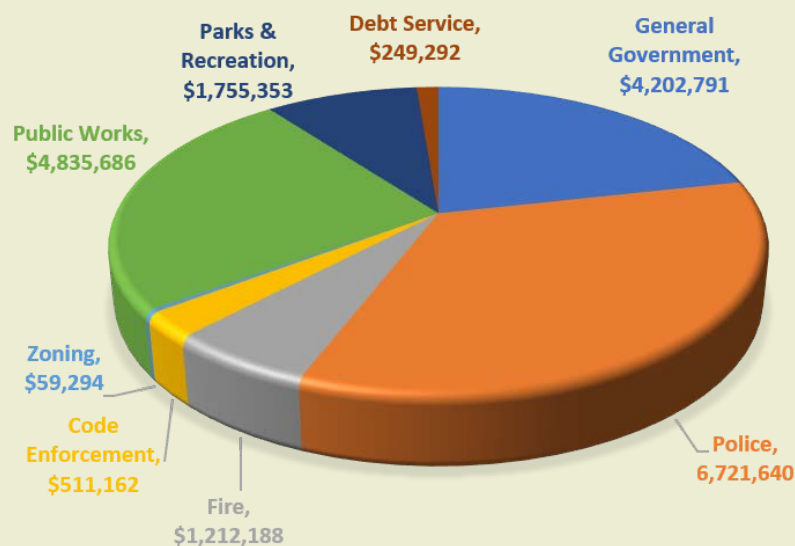
0.37 (Increase in General Fund millage)

WHERE DOES GENERAL FUND REVENUE GO?

2017 Expenses



2018 Expenses



Township Sees Uptick In Grants

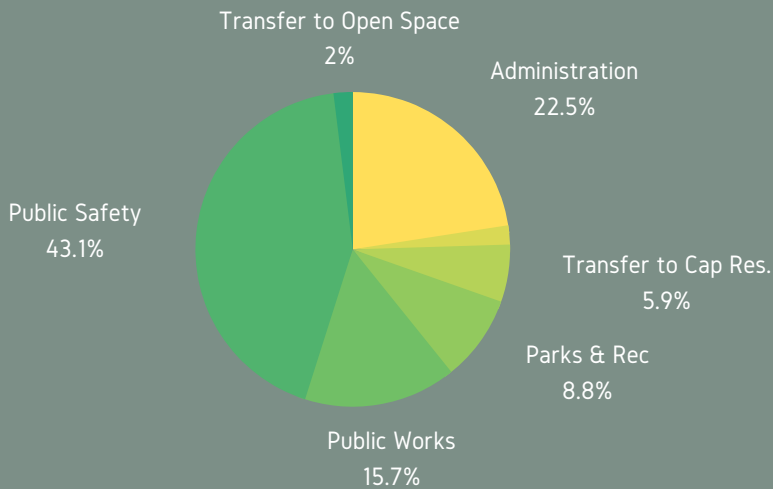
The Township had a banner year in obtaining grants in 2018. In total, the Township is now managing \$4M in grant monies from various regional, state, and federal agencies. These awards range from grants to improve trails to traffic signals. Some of the larger grants include:

- **\$1.72M** from the Delaware Valley Regional Planning Commission to replace the Pulaski Drive Bridge.
- **\$1.0M** Redevelopment Assistance Capital Program (RACP) grant for Wissahickon Park and the Wissahickon Valley Boys & Girls Club.
- **\$641,552** from Pennsylvania's Transportation Alternatives Set-Aside Grant program to construct a trail along Union Meeting Road from Township Line Road (south) at the border of Plymouth Township to Jolly Road.
- **\$243,012** from the state's "Green Light Go" program to fund emergency preemption, video detection, ADA-compliant push buttons and controllers on traffic lights at Skippack Pike's intersections with Narcissa Road, Lewis Lane, Walton Road, Union Meeting Road and Cathcart Road.

These grants are in various stages of development. Some grants, like the Pulaski Drive Bridge grant will not go to construction for a number of years. Please check www.whitpaintownship.org for updates and while you are there, please sign up for our electronic newsletter, The Wire.



HOW IS GENERAL FUND REVENUE SPENT?



GENERAL FUND

The general fund is the largest single fund in the Township's budget. The largest expenditure in the general fund is public safety. This budget category includes the Police, Fire Marshal, Code Enforcement and Zoning Departments. The next largest component of the general fund is attributed to Administration. This budget line item is inclusive of all expenses for the Engineering, Finance, Administration, and IT Departments, the Township Solicitor, and other associated expenses.

INNOVATIVE COST SAVINGS

The Public Works Department hosted a nationally certified Crane Safety Climbing School training session at Centre Square Park.

As part of this three-day training, over 100 participants and instructors removed 30 large trees that were dead or severely diseased near walking trails and the main roadway at the park. Many of these trees were blighted from the invasive Emerald Ash Borer which has been devastating ash trees throughout our region. Hosting this training class proved to be very beneficial for the Township and yielded a net savings of over \$45,000.



PUBLIC PRIVATE PARTNERSHIPS

Supervisors Join WRA to Open Clubhouse

The Board of Supervisors joined with officials from the Whitpain Recreation Association to celebrate the grand opening of the new WRA Clubhouse at Centre Square Park in late April of 2018. The Clubhouse contains public restrooms, meeting space for the WRA, and a concession stand.

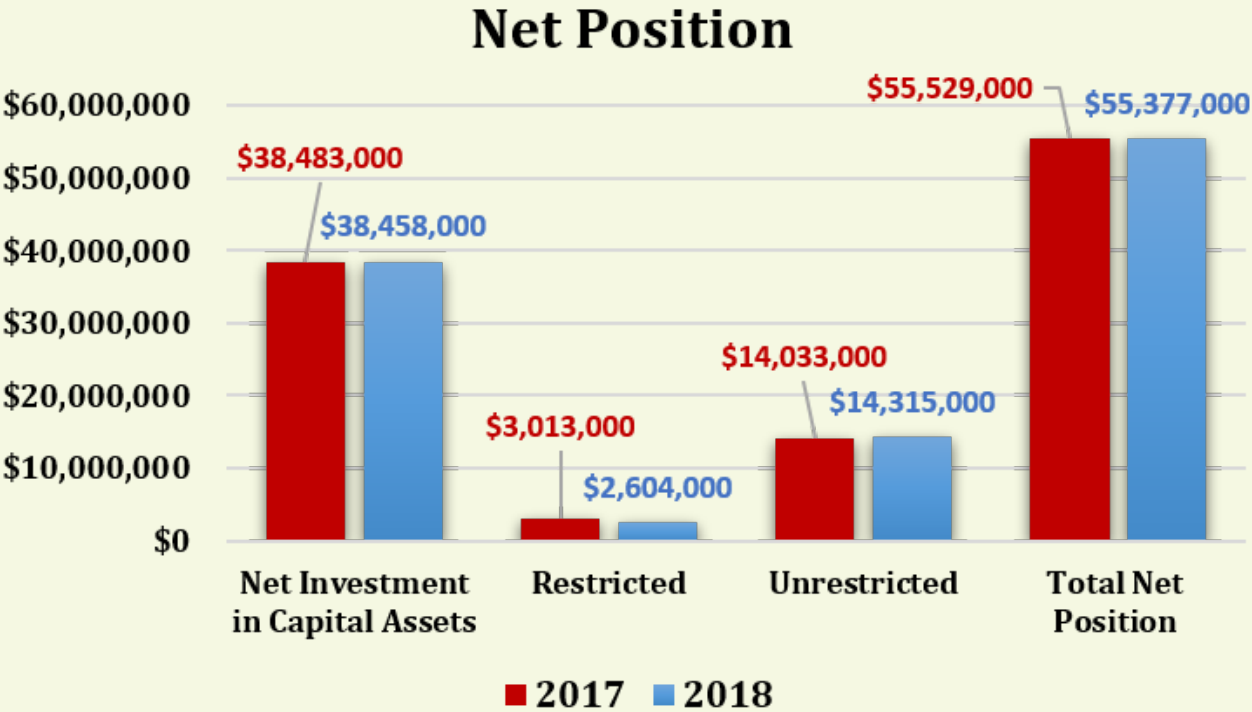
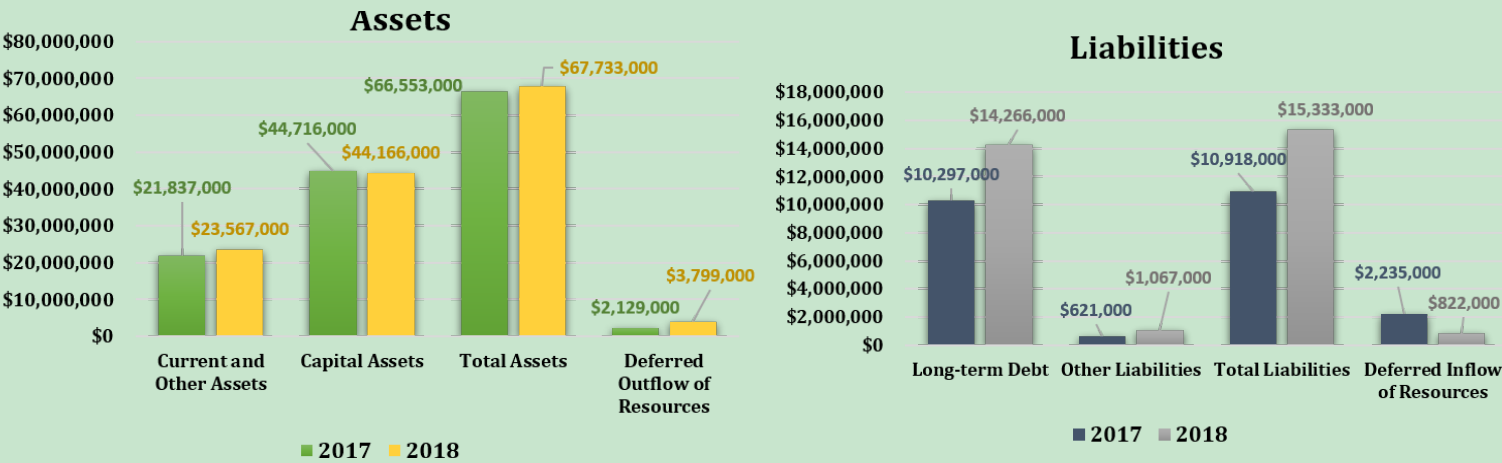
CSFC Moves Into New Home

The volunteers at Centre Square Fire Company (CSFC) moved into their new station in early 2018. The new station features 6-bays, improved training and meeting facilities and a bunk room. The old station has been removed clearing the way for a new roadway that will allow signalized access to the rear of the new Centre Square Commons center from Skippack Pike.



STATEMENT OF NET POSITION

The Statement of Net Position demonstrates the sound financial outlook for Whitpain as of December 31, 2018. The net position of the Township as of December 31, 2018 was \$55.37M. The Statement of Net Position is presented here in summary format. For greater detail please see the Whitpain Township Comprehensive Annual Financial Report (CAFR) which is available at www.whitpaintownship.org or in the Whitpain Township Administration building.

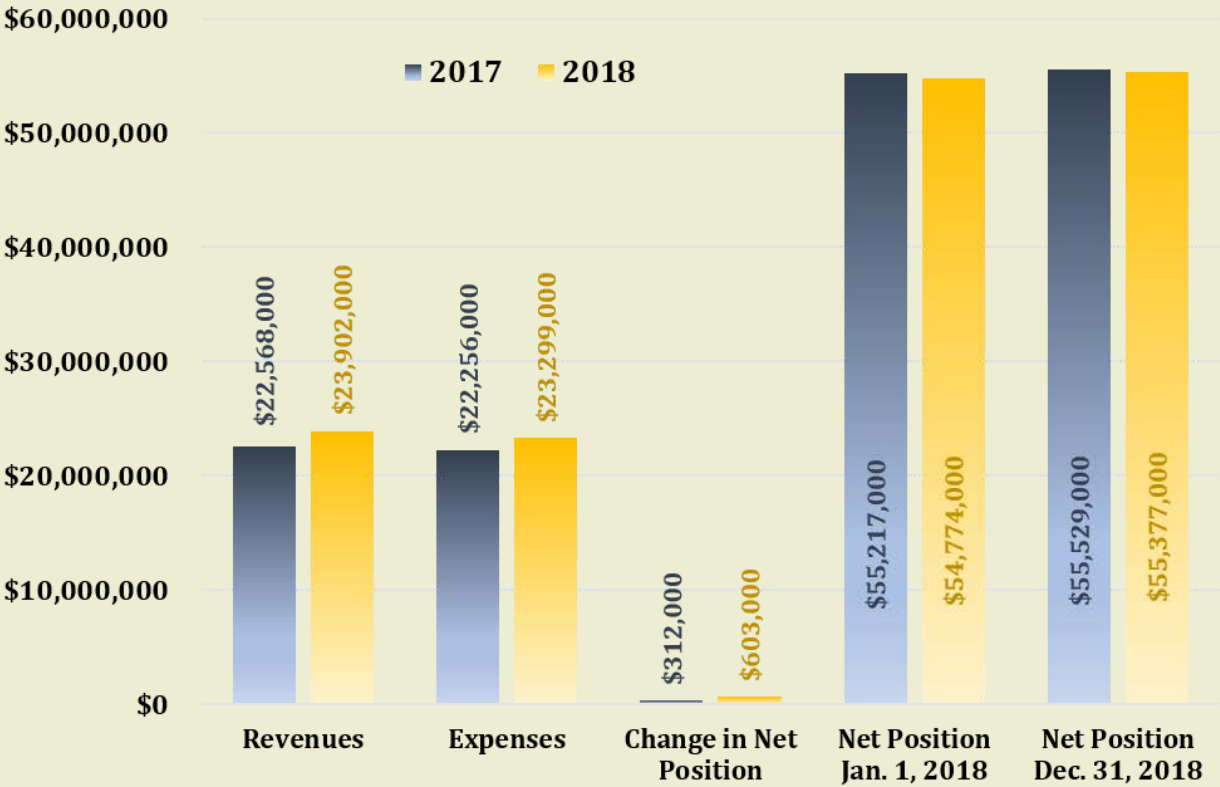




STATEMENT OF ACTIVITIES

The Statement of Activities reports all financial activity for the fiscal year ended December 31, 2018. The statement presents a summary overview describing how the Township’s net position changed during the year as a result of all revenues collected and expenses incurred. For a more detailed review of financial activity, please see the Whitpain Township Comprehensive Annual Financial Report (CAFR) which is available at www.whitpaintownship.org or in the Whitpain Township Administration building.

	2017	2018
Revenues	\$22,568,000	\$23,902,000
Expenses	\$22,256,000	\$23,299,000
Change in Net Position	\$312,000	\$603,000
Net Position Jan. 1, 2018	\$55,217,000	\$54,774,000
Net Position Dec. 31, 2018	\$55,529,000	\$55,377,000





Long-Term Bond Debt

As of December 31, 2018 Whitpain Township had a total \$5,675,000 of outstanding debt from two previous bond issues. The first of these bond issues was used for the purchase of Prophecy Creek Park in 1999, and the second was for the purchase of fire apparatus in 2012.

Moody's has awarded the Township with the highest possible bond rating of Aaa. This rating was first issued in 2012 and subsequently reaffirmed twice, most recently in 2018. Currently, only twelve other municipalities in Pennsylvania have received a Aaa bond rating.

Moody's determines credit ratings based on a municipality's ability to meet its financial commitments. The Aaa rating means Whitpain has an extremely strong capacity to do so. The Aaa rating is due in part to the Township's mature tax base, above-average wealth, healthy financial position, low debt, and pension liability.

