

# Wissahickon Watershed Partnership & Homeowner's Guide to Stormwater Management



Joanne Dahme  
Office of Watersheds,  
Philadelphia Water Department



## **Watershed:**

An area of land that drains to a particular body of water

### ***Wissahickon Watershed***

- Watershed: 64 square miles
- Stream Length: 24.1 miles

### ***Wissahickon Watershed Management Plan***

- Integrated, long-range road map designed to serve the twin goals of protecting natural resources and advancing vital communities.
- It reaches out to include municipal and conservation planning efforts that strive to ensure that growth within the watershed occurs only with special care to the environment.



# Wissahickon Watershed Partnership

- The WMP draws on the knowledge and goals of the diverse people who live, work, and dream in all areas of the watershed.
- These “stakeholders” provide the catalyst for change, the energy to create the plan, and the vigilance to implement and sustain the plan. They become the watershed’s guardians – the keepers of the planning vision.



*Wissahickon Watershed Partnership Kick-Off*



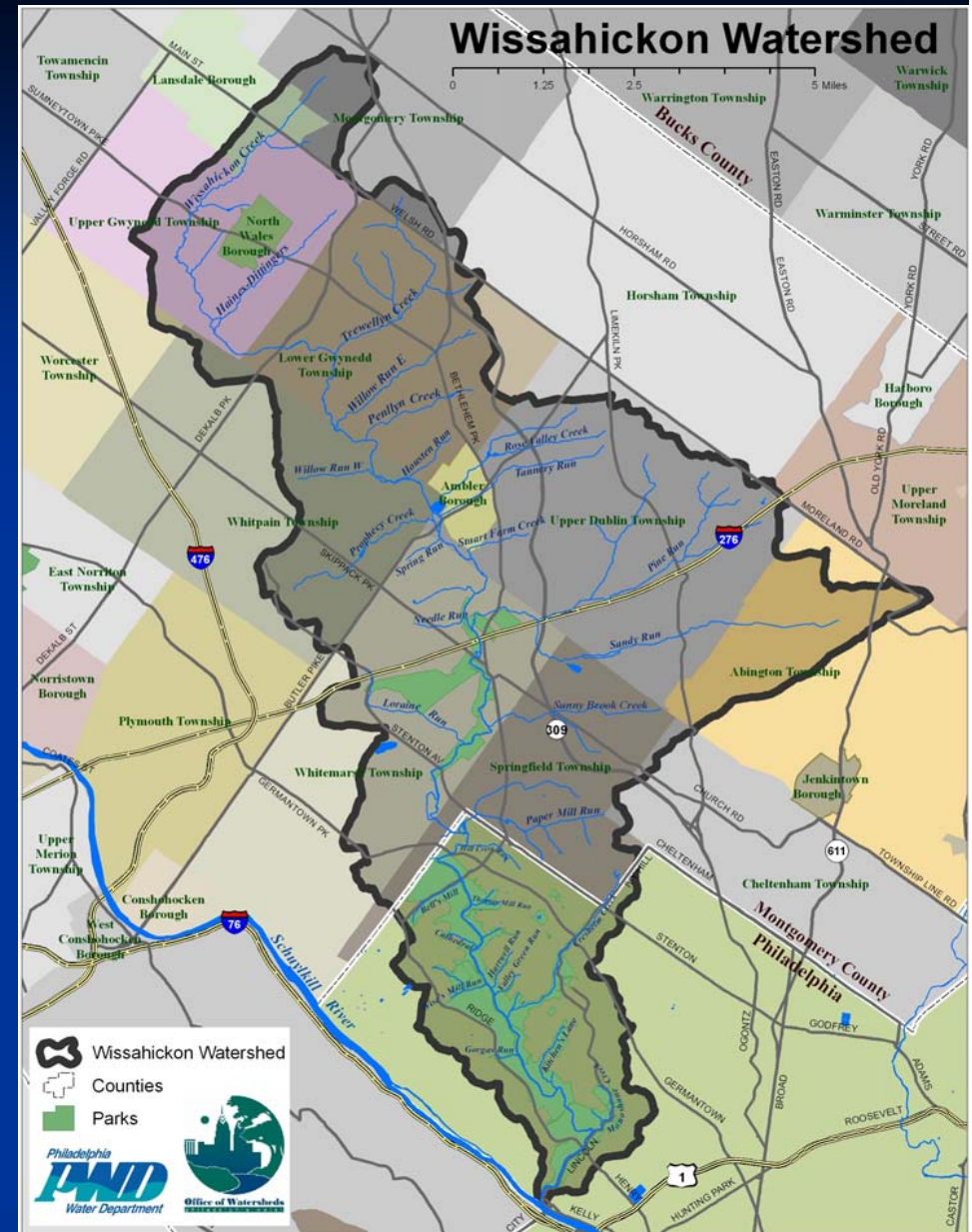
# Wissahickon Partners

- 15 Municipalities:

Abington	Lower Gwynedd
Ambler	Springfield
Montgomery	Upper Dublin
Cheltenham	Horsham
North Wales	Upper Gwynedd
Lansdale	Philadelphia
Whitemarsh	Whitpain
Worcester	

- Some of our other partners:

PA DEP
Temple Ambler
U.S. EPA
Morris Arboretum
McNeil
Friends of the Wissahickon
Fairmount Park
Wissahickon Valley Watershed Association



# Homeowner's Guide to Stormwater Management

- "Clean Water – Green City"  
Vision: To unite the city of Philadelphia and its neighboring suburbs with its water environment
- Partner with municipalities, homeowner associations and residents to help us manage stormwater in an environmentally-friendly manner
- The Homeowner's Guide is one way of reaching out to this audience.





# Practices

Tips on behavioral changes to help make a difference!

- Vehicle Maintenance
- Lawn & Garden Care
- Pet Waste
- Vehicle Washing



# Structural Projects

Step-by-step instructions on projects you can do at home that will make a difference!



- Tree Planting
- Backyard Stream Maintenance
- Planters (Container Gardens)
- Rain Barrels
- Rain Gardens
- Wildflower Meadow
- Dry Well
- Infiltration Test
- Winter De-Icing





# Homeowner's Guide to Stormwater Management

- Hardcopies are available here tonight!
- The Guide is also available on-line:  
<http://www.phillyriverinfo.org>
- Please share this guide with your friends, family and neighbors.





# Stormwater Best Management Practices (BMP) Recognition Program



Submit your project on-line:  
<http://www.stormwaterBMP.org>



- Recognizes innovative stormwater BMPs in the Delaware Valley (Philadelphia, Chester, Delaware, Montgomery & Bucks), watersheds located in the direct drainage basin to Philadelphia: Darby Cobbs, Pennypack, Poquessing, Tookany/Tacony-Frankford, Schuylkill, and Delaware
- Projects, such as treatment wetlands, infiltration swales, green roofs, rain gardens, etc. are eligible (Designed or Implemented)
- Anyone can submit a project – developers, engineers, architects, college students, homeowners, etc.
- **The deadline for submissions is April 17, 2006.**
- Recognized projects will be awarded at the 2006 Watersheds Conference scheduled for May 18th at the Academy of Natural Sciences and May 19th at Villanova University.
- Partners: PEC, DEP, Montgomery County Conservation District, Villanova and DVGBC.